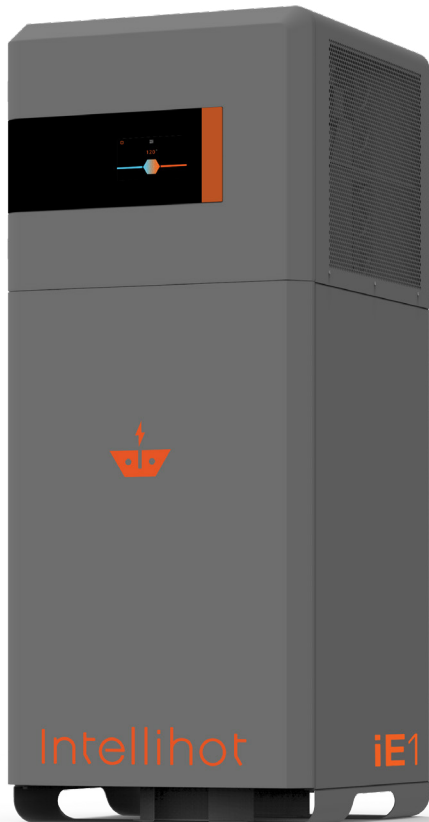


iE1 Submittal Data

Date:	<input type="text"/>	Bid Date:	<input type="text"/>
Project Name:	<input type="text"/>	Factory Option:	<input type="checkbox"/> Solar
Project #:	<input type="text"/>	Electric Option:	<input type="checkbox"/> iE1 Std
City State Zip:	<input type="text"/> <input type="text"/> <input type="text"/>		<input type="checkbox"/> iE1 Mid
Engineer:	<input type="text"/>		<input type="checkbox"/> iE1 Max
Contractor:	<input type="text"/>		

Operational Modes	Temperature Rise (ΔT) °F											
	30	40	50	60	70	80	90	100	110	120	130	140
Efficiency Mode (GPH)	197	148	118	98	84	74	66	59	54	49	45	42
Electric Mode (GPH)	165	124	99	83	71	62	55	50	45	41	38	35
Hybrid Mode (GPH)	362	272	217	181	155	136	121	109	99	91	84	78



KEY FEATURES

- No storage, tankless, heats on-demand
- Uses CO₂, GWP of 1
- Suitable for high-pressure multistory buildings
- Handles tough hard water scale
- Produces water up to 170°F

DESIGN FEATURES

- Cellular connectivity with 24/7 factory monitoring
- Automatic software update over the air
- Grid enabled (CTA-2045, JA13/JA14)
- Wirelessly cascade over Bluetooth up to 4 units
- Can be installed indoors or outdoors
- Compact and lightweight
- Designed and built in the US

OPERATIONAL MODES

- Efficiency
- Hybrid
- Electric
- Self-learning



iE1 Options

Model Number		iE1 Std	iE1 Mid	iE1 Max
Electric elements	kW	None	6	2x6 (12)
Input Voltage	VAC single phase	208	208	208
Current	Amps	17	46	75
Recommended Circuit Breaker	Amps	20	60	90
Electrical Input	kW	3.4	9.4	15.4

iE1 Specifications

Type	Indoor / Outdoor, Floor Mounted
Power Source	Electric
Heating Output	Up to 90,000 BTU/h
COP	Up to 4.2
Compressor Type	Rotary
Safety Devices	Pressure Switch, Thermal Cutout, Overheat Protection
Ambient Installation Temperature	-10°F to 110°F
Air Flow Requirement	3500 CFM
Outlet Water Temperature Range	100°F to 170°F
Temperature Stability	+/- 4°F
First Hour Rating	154 Gallons
Connectivity	Cellular and Bluetooth
Operational Modes	Efficiency, Hybrid, Electric, Self-learning
Grid Connectivity	Via CTA-2045 module (customer supplied)/JA13/JA14
Refrigerant	R744, CO ₂ refrigerant
Cascading Protocol	Masterless, Up to 4 units
Noise Level	Up to 55 dBA
Domestic Heat Exchanger	Stainless Steel, 316L
Energy Storage	Water-Propylene-Glycol based Thermal Battery
Water Inlet & Outlet Connections	1.5" NPT Female
Unit Dimensions H X W X D (Inches)	72 X 30 X 30
Shipping Weight / Unit Weight	620 lbs / 540 lbs
Water Pressure Min / Max (PSIG)	30 / 160
CLEARANCES	
Back	24"
Front	30"
Top	8"
Sides	12"
Certifications *	Energy Star, NSF 372, UL 60355-2-40, CSA C22.2, CTA-2045
Warranty	1 Year on Parts and Compressor, 3 Years on Thermal Battery
* In Process † Delivering 110°F to the fixtures	

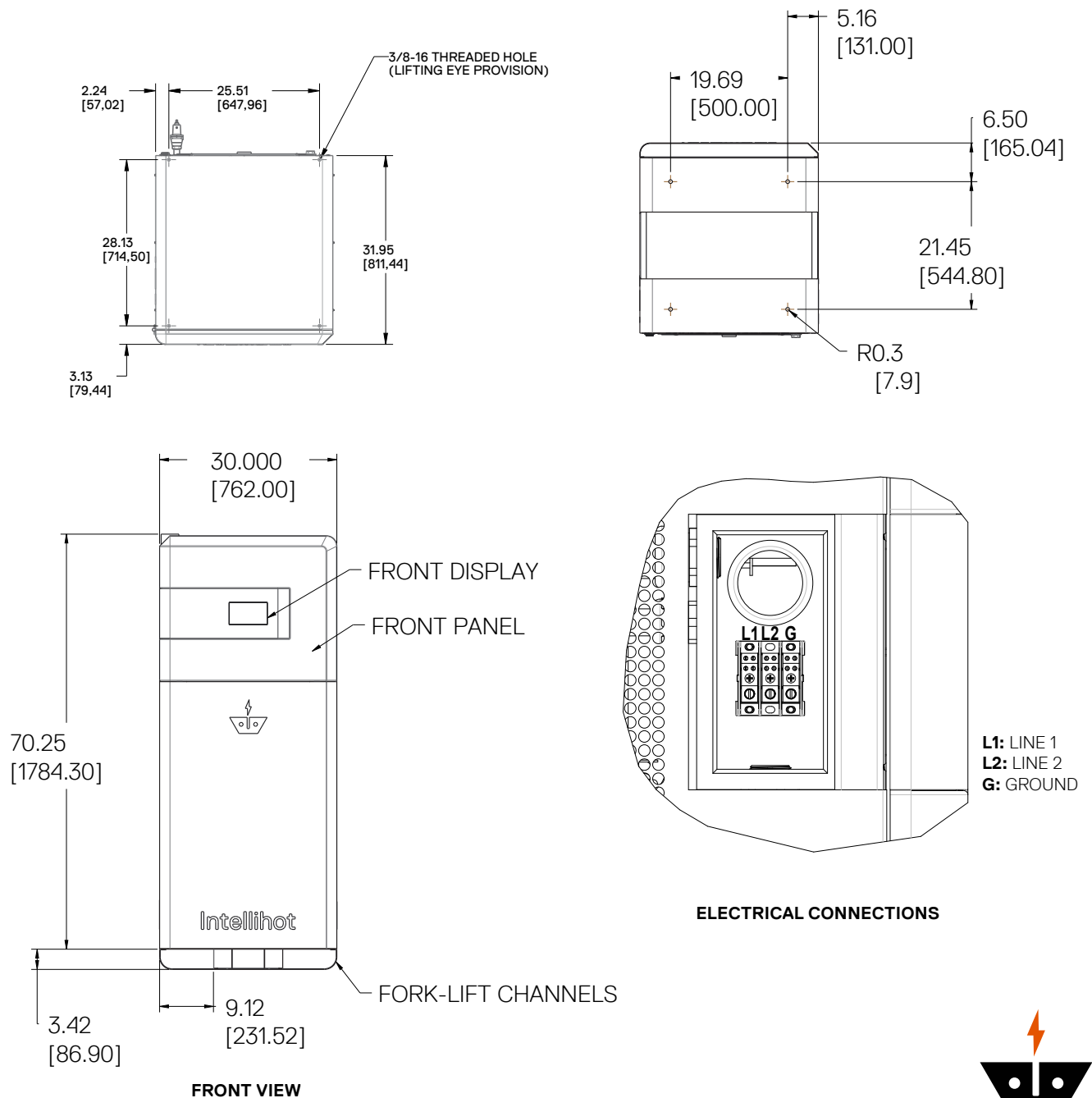


iE1 Electrical Requirements

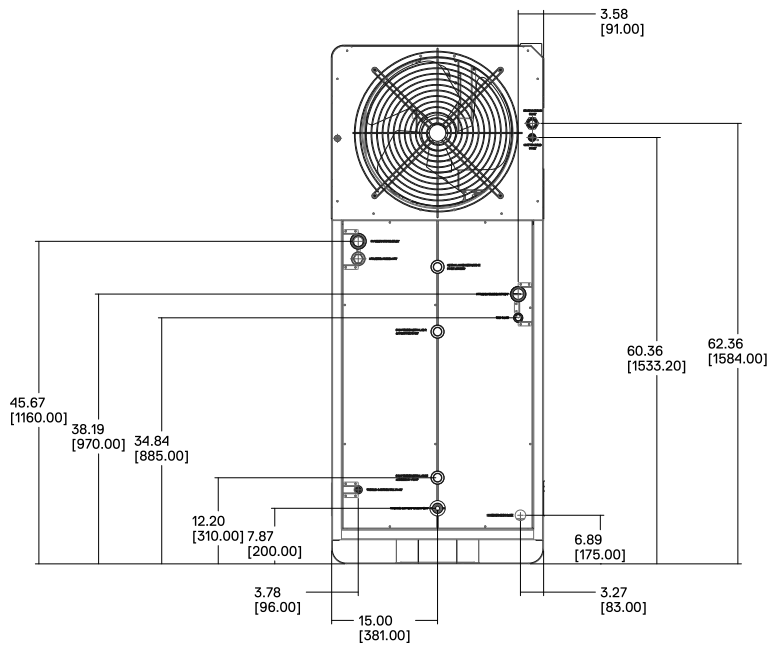
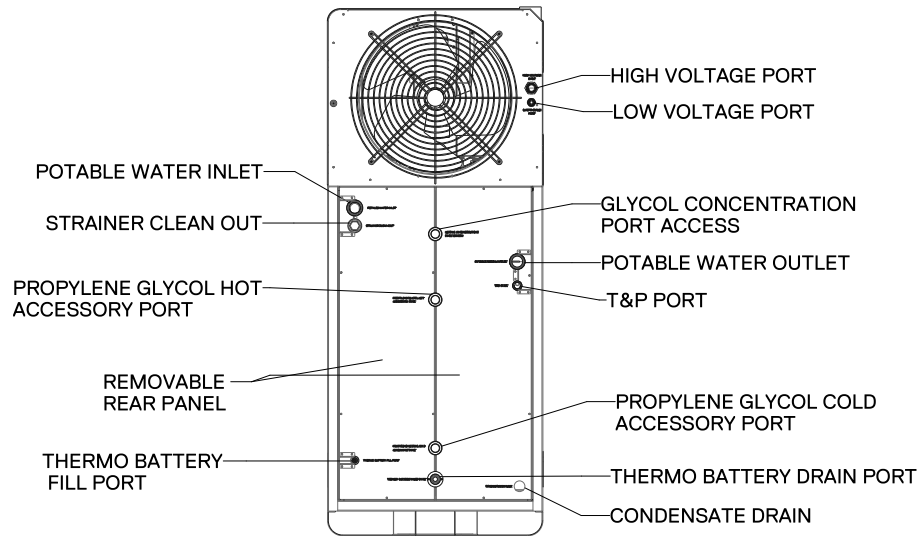
Electrical power required for the water heater is 208 VAC, 60 Hz. Each unit must have it's own dedicated breaker with a shut off switch. The shut off switch located near the sight of the water heater for maintenance and emergency shut off. Please ensure correct polarity of wiring before powering up unit. Select a model that suits your electrical infrastructure the best:

	iE1Std	iE1Mid	iE1Max
Minimum Breaker Size	20 Amps	60 Amps	90 Amps
Minimum Field Wire Gauge	12 AWG	6 AWG	3 AWG

iE1 Dimensional Specifications



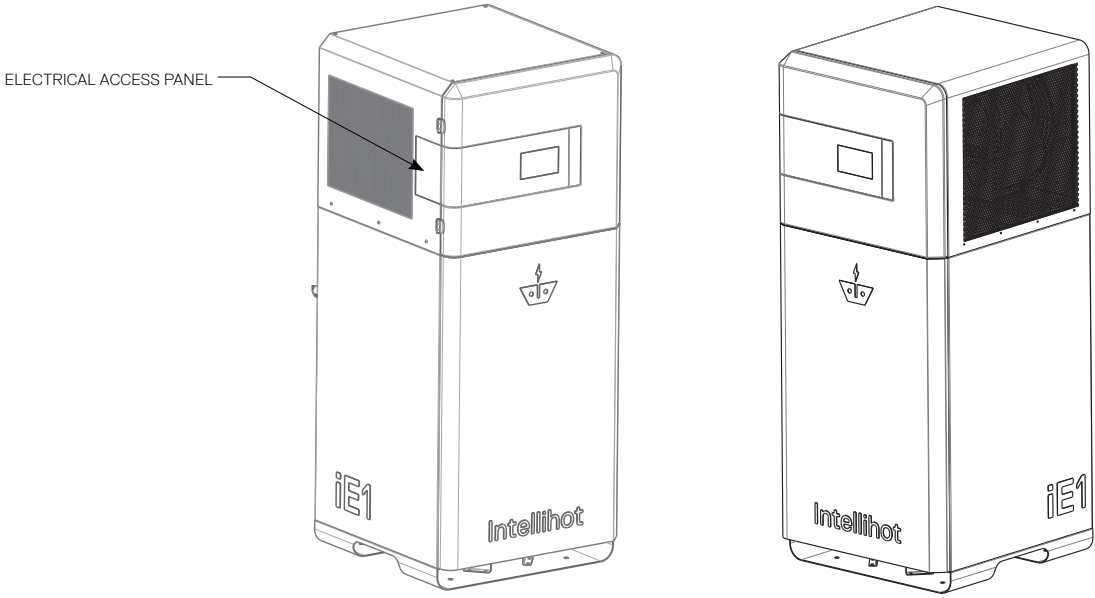
iE1 Dimensional Specifications



BACK VIEW

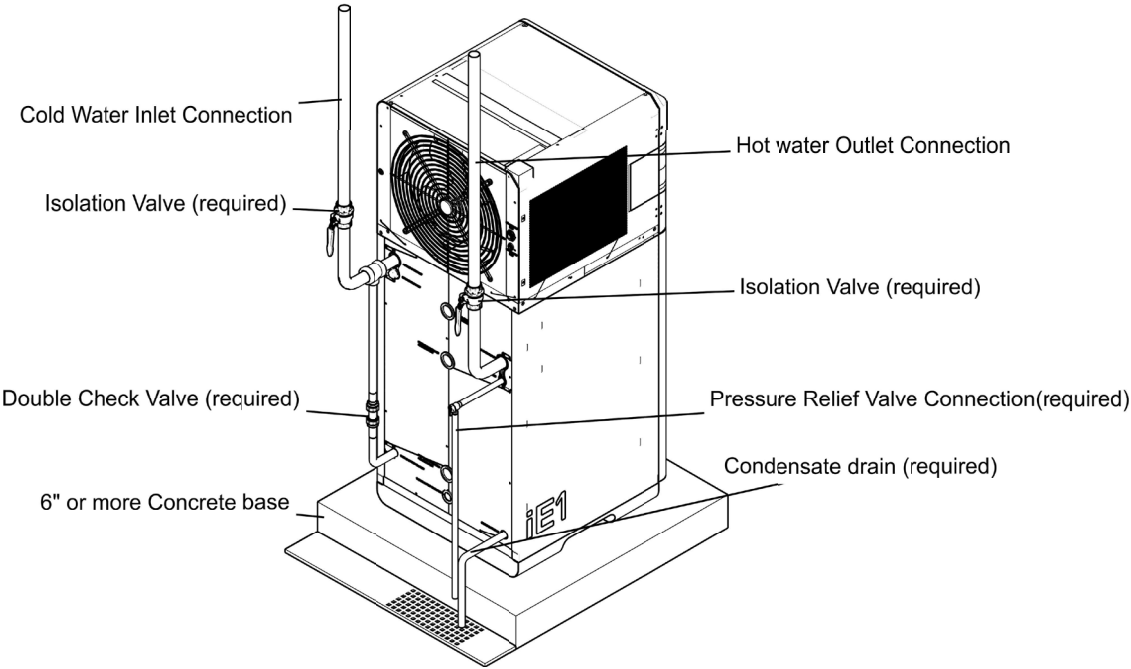


iE1 Dimensional Specifications

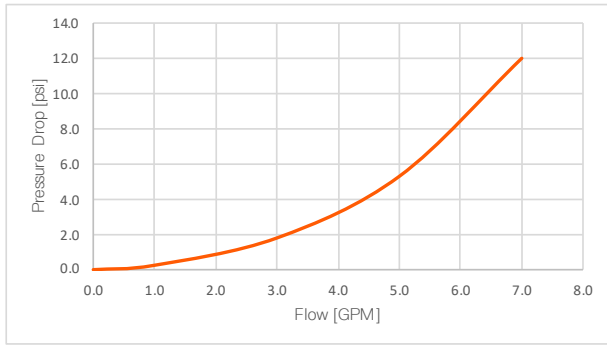


SIDE VIEWS

iE1 Plumbing Setup



iE1 Pressure Drop



iE1 Cascading

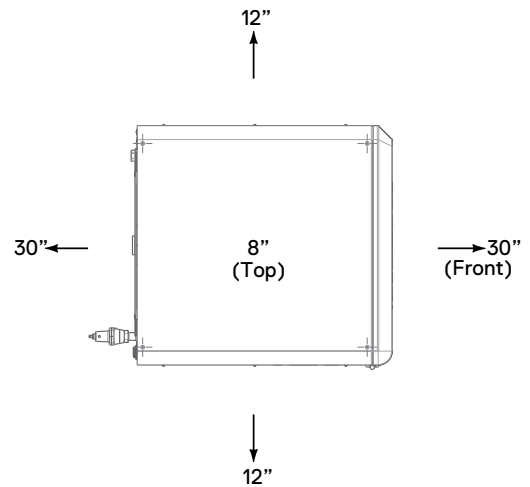
Up to four units can be cascaded wirelessly using the built-in Bluetooth capability.

iE1 Clearance Requirements

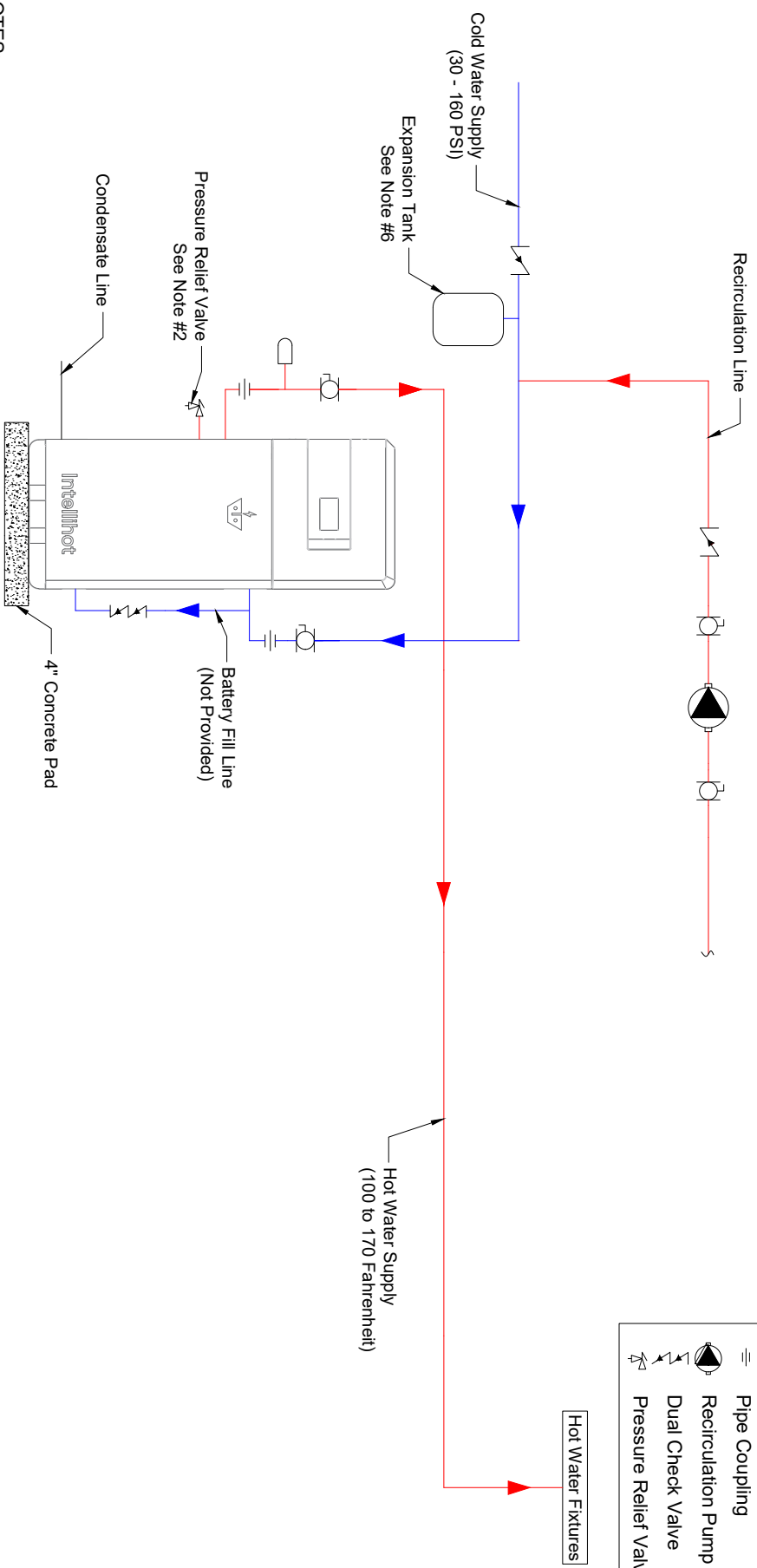
The clearances are listed in the table below. For ease of installation and in order to achieve service clearances, perform electrical connections first before making all other connections (water and condensate).

Clearance	Required		Recommended Service Clearance ¹
	From Combustibles	From Non-Combustibles	
Top	8"	8"	30"
Back	30"	30"	30"
Sides	24"	24"	30"
Front	30"	30"	30"

¹ Required clearances to enable easier service of the unit.



IE1 (1 UNIT)



LEGEND	
	Isolation Valve
	Water Hammer Arrestor
	Spring Check Valve
	Pipe Coupling
	Recirculation Pump
	Dual Check Valve
	Pressure Relief Valve

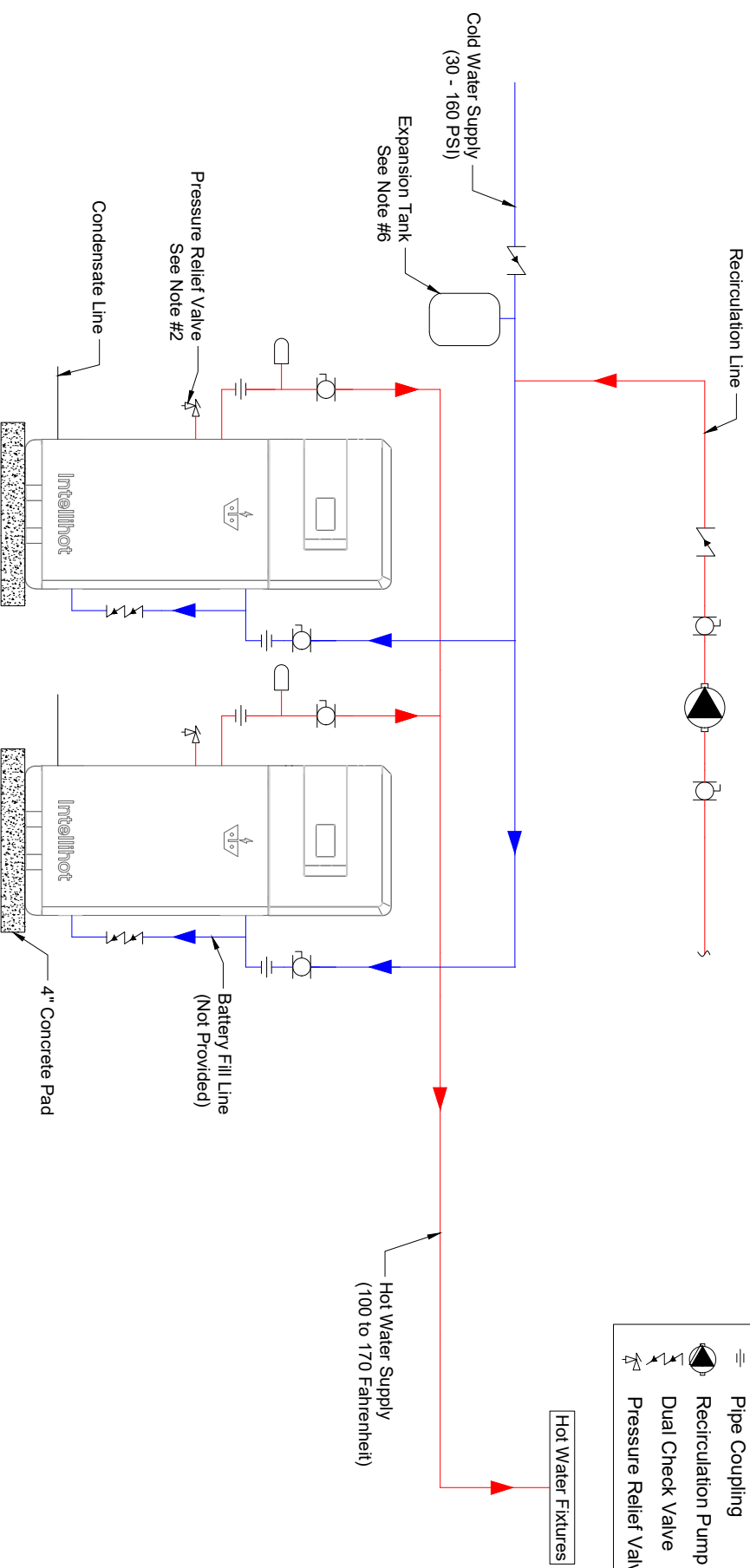
- NOTES:**
1. This schematic is a suggested piping configuration. Units are not to be installed in a closed loop system.
 2. Pressure relief valve is shipped with the unit and need to be installed.
 3. Y-strainer is built into the unit and accessible for service from the outside.
 4. Any additional requirements from local codes and ordinances shall supersede this diagram.
 5. For pipe sizes and electrical requirements, please refer to the operation and installation manual.
 6. Expansion tank to be sized based on the gallons of water in the plumbing system and to be installed per manufacturer's instruction.
 7. Spring check valve to be installed at every sink and aerator to be used at all fixtures.
 8. Water hammer arrestor is not shipped with the unit and needs to be purchased. It should be installed within 1 foot of each unit.

This document/drawing contains confidential and proprietary information and is the property of IntelliHot Inc. This document/drawing was prepared for the sole purpose of soliciting quotes, producing samples, or propose services. It is submitted in confidence on the condition that you and your representatives have, by receiving it, agreed not to reproduce or copy it, in whole or in part, or to furnish such information to others, or to make an other use of it except for the purposes stated above.

DRAWING NUMBER:
JOB NAME:



IE1 (2 UNITS)

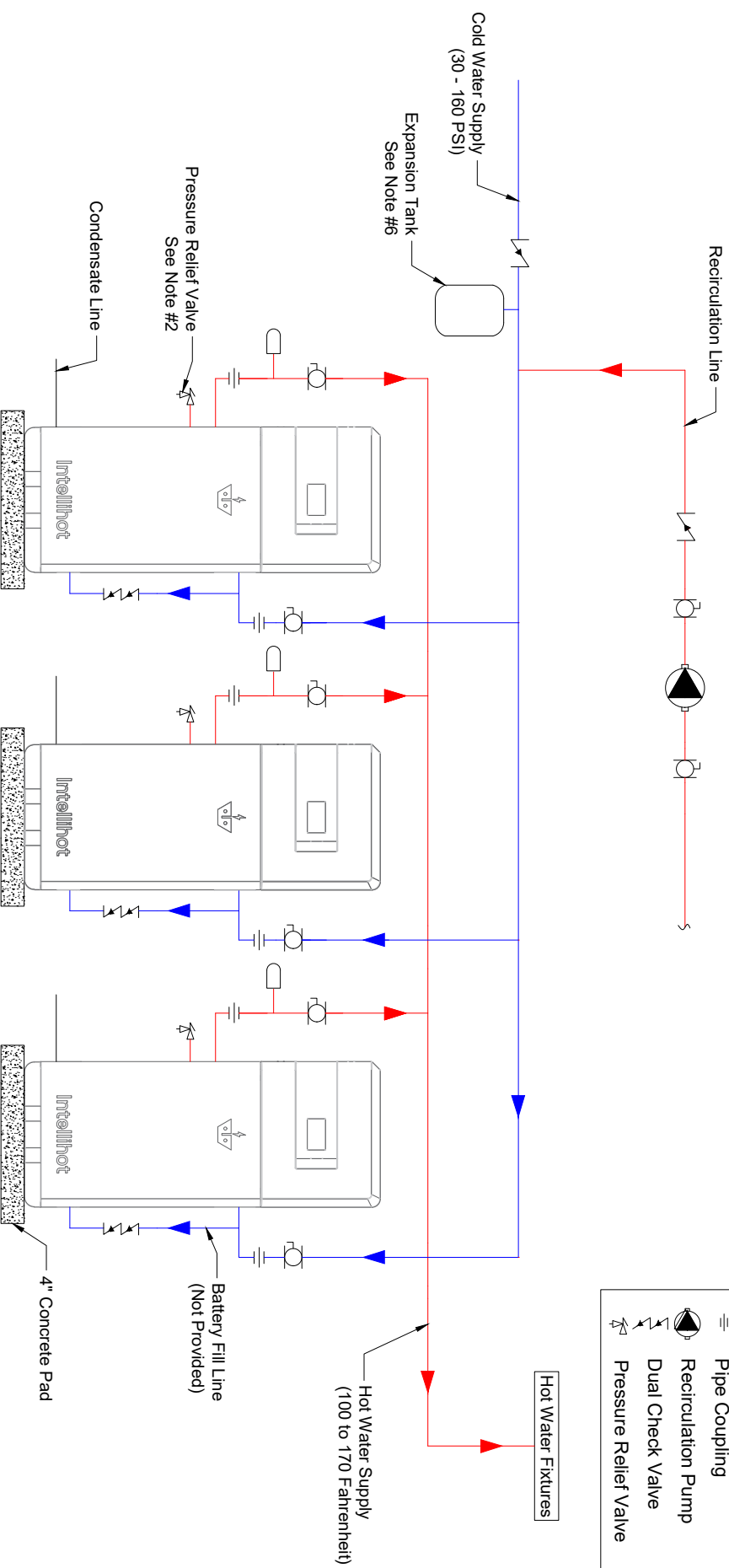


LEGEND	
	Isolation Valve
	Water Hammer Arrestor
	Spring Check Valve
	Pipe Coupling
	Recirculation Pump
	Dual Check Valve
	Pressure Relief Valve

- NOTES:**
1. This schematic is a suggested piping configuration. Units are not to be installed in a closed loop system.
 2. Pressure relief valve is shipped with the unit and need to be installed.
 3. Y-strainer is built into the unit and accessible for service from the outside.
 4. Any additional requirements from local codes and ordinances shall supersede this diagram.
 5. For pipe sizes and electrical requirements, please refer to the operation and installation manual.
 6. Expansion tank to be sized based on the gallons of water in the plumbing system and to be installed per manufacturer's instruction.
 7. Spring check valve to be installed at every sink and aerator to be used at all fixtures.
 8. Water hammer arrestor is not shipped with the unit and needs to be purchased. It should be installed within 1 foot of each unit.

This document/drawing contains confidential and proprietary information and is the property of Intellihot Inc. This document/drawing was prepared for the sole purpose of soliciting quotes, producing samples, or propose services. It is submitted in confidence on the condition that you and your representatives have, by receiving it, agreed not to reproduce or copy it, in whole or in part, or to furnish such information to others, or to make an other use of it except for the purposes stated above.

IE1 (3 UNITS)



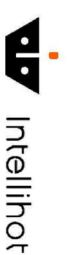
LEGEND	
	Isolation Valve
	Water Hammer Arrestor
	Spring Check Valve
	Pipe Coupling
	Recirculation Pump
	Dual Check Valve
	Pressure Relief Valve

NOTES:

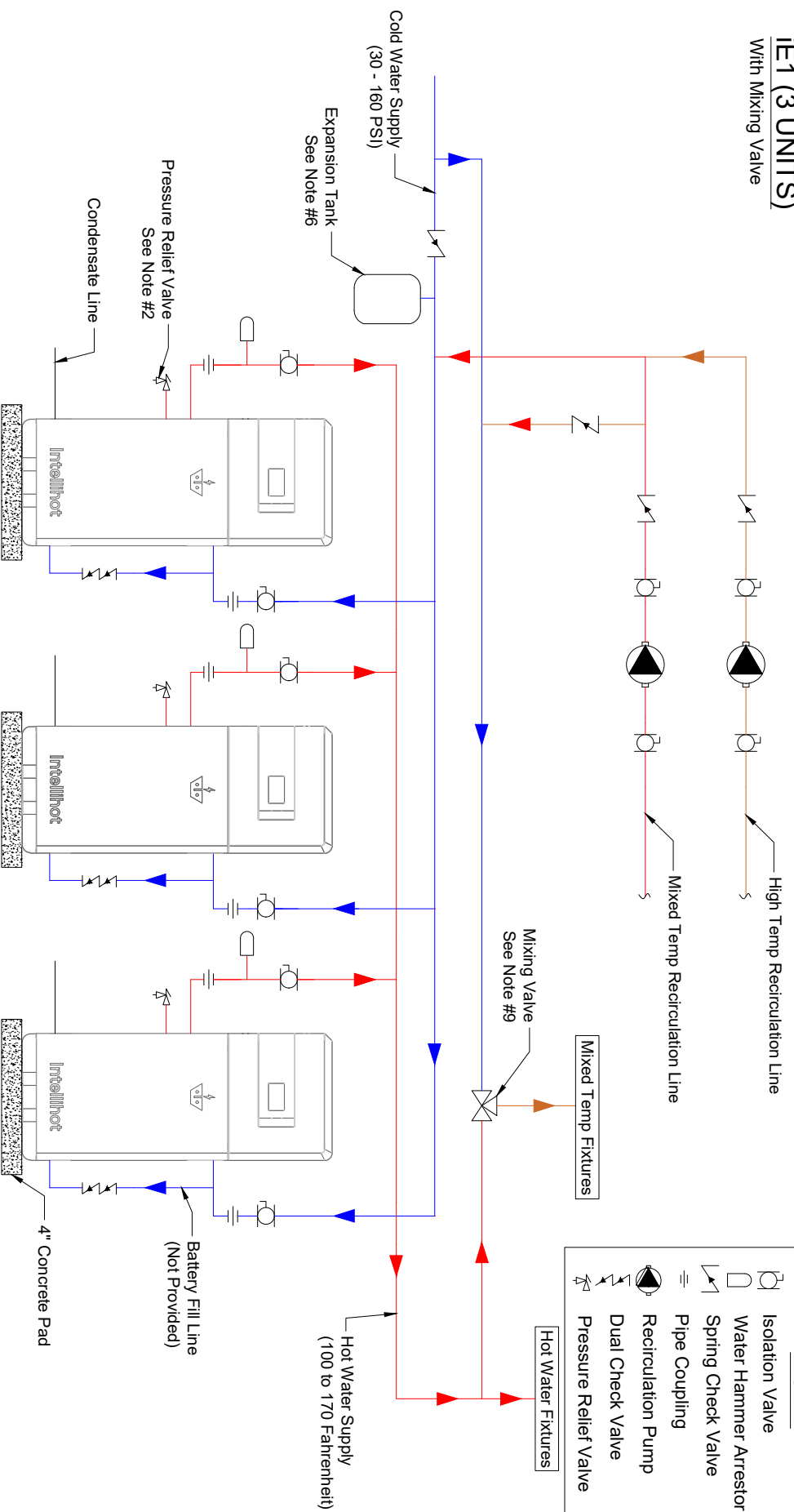
1. This schematic is a suggested piping configuration. Units are not to be installed in a closed loop system.
2. Pressure relief valve is shipped with the unit and need to be installed.
3. Y-strainer is built into the unit and accessible for service from the outside.
4. Any additional requirements from local codes and ordinances shall supersede this diagram.
5. For pipe sizes and electrical requirements, please refer to the plumbing system and to be installed per manufacturer's instruction.
6. Expansion tank to be sized based on the gallons of water in the plumbing system and to be installed per manufacturer's instruction.
7. Spring check valve to be installed at every sink and aerator to be used at all fixtures.
8. Water hammer arrestor is not shipped with the unit and needs to be purchased. It should be installed within 1 foot of each unit.

This document/drawing contains confidential and proprietary information and is the property of Intellihot Inc. This document/drawing was prepared for the sole purpose of soliciting quotes, producing samples, or propose services. It is submitted in confidence on the condition that you and your representatives have, by receiving it, agreed not to reproduce or copy it, in whole or in part, or to furnish such information to others, or to make an other use of it except for the purposes stated above.

DRAWING NUMBER:
JOB NAME:



IE1 (3 UNITS) With Mixing Valve



LEGEND	
	Isolation Valve
	Water Hammer Arrestor
	Spring Check Valve
	Pipe Coupling
	Recirculation Pump
	Dual Check Valve
	Pressure Relief Valve

- NOTES:**
1. This schematic is a suggested piping configuration. Units are not to be installed in a closed loop system.
 2. Pressure relief valve is shipped with the unit and need to be installed.
 3. Y-strainer is built into the unit and accessible for service from the outside.
 4. Any additional requirements from local codes and ordinances shall supersede this diagram.
 5. For pipe sizes and electrical requirements, please refer to the operation and installation manual.
 6. Expansion tank to be sized based on the gallons of water in the plumbing system and to be installed per manufacturer's instruction.
 7. Spring check valve to be installed at every sink and aerator to be used at all fixtures.
 8. Water hammer arrestor is not shipped with the unit and needs to be purchased. It should be installed within 1 foot of each unit.
 9. Mixing Valve and plumbing circuit to be installed per Manufacturer's Instructions.

This document/drawing contains confidential and proprietary information and is the property of Intellihot Inc. This document/drawing was prepared for the sole purpose of soliciting quotes, producing samples, or propose services. It is submitted in confidence on the condition that you and your representatives have, by receiving it, agreed not to reproduce or copy it, in whole or in part, or to furnish such information to others, or to make an other use of it except for the purposes stated above.

DRAWING NUMBER:
JOB NAME:

